

## Erratum to: Complete genome sequence of *Pirellula staley* type strain (ATCC 27377<sup>T</sup>)

Alicia Clum<sup>1</sup>, Brian J. Tindall<sup>2</sup>, Johannes Sikorski<sup>2</sup>, Natalia Ivanova<sup>1</sup>, Konstantinos Mavromatis<sup>1</sup>, Susan Lucas<sup>1</sup>, Tijana Glavina Del Rio<sup>1</sup>, Matt Nolan<sup>1</sup>, Feng Chen<sup>1</sup>, Hope Tice<sup>1</sup>, Sam Pitluck<sup>1</sup>, Jan-Fang Cheng<sup>1</sup>, Olga Chertkov<sup>1,3</sup>, Thomas Brettin<sup>1,3</sup>, Cliff Han<sup>1,3</sup>, John C. Detter<sup>1,3</sup>, Cheryl Kuske<sup>1,3</sup>, David Bruce<sup>1,3</sup>, Lynne Goodwin<sup>1,3</sup>, Galina Ovchinnikova<sup>1</sup>, Amrita Pati<sup>1</sup>, Natalia Mikhailova<sup>1</sup>, Amy Chen<sup>4</sup>, Krishna Palaniappan<sup>4</sup>, Miriam Land<sup>1,5</sup>, Loren Hauser<sup>1,5</sup>, Yun-Juan Chang<sup>1,5</sup>, Cynthia D. Jeffries<sup>1,5</sup>, Patrick Chain<sup>1,3</sup>, Manfred Rohde<sup>6</sup>, Markus Göker<sup>2</sup>, Jim Bristow<sup>1</sup>, Jonathan A. Eisen<sup>1,7</sup>, Victor Markowitz<sup>4</sup>, Philip Hugenholtz<sup>1</sup>, Nikos C. Kyrpides<sup>1</sup>, Hans-Peter Klenk<sup>2</sup>, and Alla Lapidus<sup>1\*</sup>

<sup>1</sup> DOE Joint Genome Institute, Walnut Creek, California, USA

<sup>2</sup> DSMZ – German Collection of Microorganisms and Cell Cultures GmbH, Braunschweig, Germany

<sup>3</sup> Los Alamos National Laboratory, Bioscience Division, Los Alamos, New Mexico, USA

<sup>4</sup> Biological Data Management and Technology Center, Lawrence Berkeley National Laboratory, Berkeley, California, USA

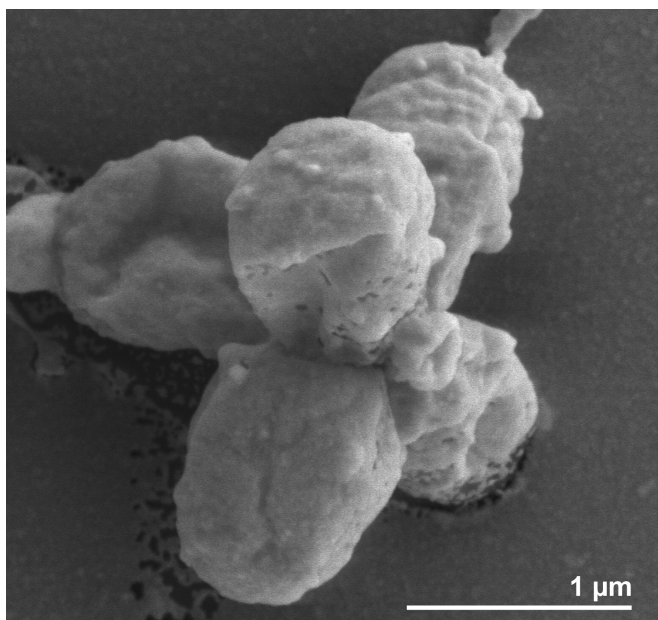
<sup>5</sup> Oak Ridge National Laboratory, Oak Ridge, Tennessee, USA

<sup>6</sup> HZI – Helmholtz Centre for Infection Research, Braunschweig, Germany

<sup>7</sup> University of California Davis Genome Center, Davis, California, USA

\*Corresponding author: Alla Lapidus

Volume 1 No. 3, p. 310, Figure 1 should appear as shown below. The mature cell shape has previously been described as teardrop- to pear-shaped, with the attachment pole slightly pointed [1]. Our paper showed a rod-shaped cell, which is not the correct morphology for this species.



**Figure 1.** Scanning electron micrograph of *P. staley* ATCC 27377<sup>T</sup>

## REFERENCES

1. Schlesner H, Hirsch P. Assignment of ATCC 27377 to *Pirella* gen. nov. as *Pirella staley* comb. nov. *Int J Syst Bacteriol* 1984; **34**:492-495. doi:10.1099/00207713-34-4-492