

Erratum to: Complete genome sequence of *Atopobium parvulum* type strain (IPP 1246^T)

Alex Copeland¹, Johannes Sikorski², Alla Lapidus¹, Matt Nolan¹, Tijana Glavina Del Rio¹, Susan Lucas¹, Feng Chen¹, Hope Tice¹, Sam Pitluck¹, Jan-Fang Cheng¹, Rüdiger Pukall², Olga Chertkov^{1,3}, Thomas Brettin^{1,3}, Cliff Han^{1,3}, Cheryl Kuske^{1,3}, David Bruce^{1,3}, Lynne Goodwin^{1,3}, Natalia Ivanova¹, Konstantinos Mavromatis¹, Natalia Mikhailova¹, Amy Chen⁴, Krishna Palaniappan⁴, Patrick Chain^{1,5}, Manfred Rohde⁶, Markus Göker², James Bristow¹, Jonathan A. Eisen^{1,7}, Victor Markowitz⁴, Philip Hugenholtz¹, Nikos C. Kyrpides¹, Hans-Peter Klenk*, and John C. Detter^{1,3}

¹ DOE Joint Genome Institute, Walnut Creek, California, USA

² DSMZ - German Collection of Microorganisms and Cell Cultures GmbH, Braunschweig, Germany

³ Los Alamos National Laboratory, Bioscience Division, Los Alamos, New Mexico, USA

⁴ Biological Data Management and Technology Center, Lawrence Berkeley National Laboratory, Berkeley, California, USA

⁵ Lawrence Livermore National Laboratory, Livermore, California, USA

⁶ HZI - Helmholtz Centre for Infection Research, Braunschweig, Germany

⁷ University of California Davis Genome Center, Davis, California, USA

*Corresponding author: Hans-Peter Klenk

In Copeland *et al.* [1], Figure 1 should appear as shown below. The mature cell shape has previously been described as cocci that occur singly, in pairs, in clumps, and in short chains, occasionally with central swelling [2,3]. Our paper showed cocci or coccobacilli, which is not the correct morphology for this species and was caused by a mix-up with the Figure 2 Pukall *et al.*, [4].

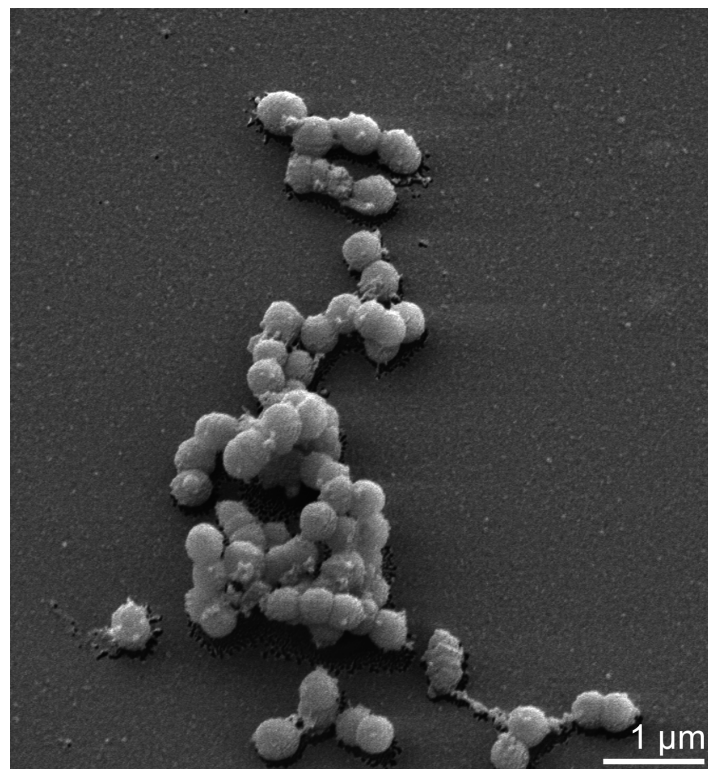


Figure 1. Scanning electron micrograph of *A. parvulum* IPP 1246^T

References

1. Copeland A, Sikorski J, Lapidus A, Nolan M, Glavina Del Rio T, Lucas S, Chen F, Tice H, Pitluck S, Cheng JF, *et al.* Complete genome sequence of *Atopobium parvulum* type strain (IPP 1246^T). *Stand Genomic Sci* 2009; **1**:166-173. [doi:10.4056/sigs.29547](https://doi.org/10.4056/sigs.29547)
2. Olsen I, Johnson JL, Moore LVM, Moore WEC. *Lactobacillus uli* sp. nov. and *Lactobacillus rimae* sp. nov. from the human gingival crevice and emended descriptions of *Lactobacillus minutus* and *Streptococcus parvulus*. *Int J Syst Bacteriol* 1991; **41**:261-266. [PubMed](https://pubmed.ncbi.nlm.nih.gov/) [doi:10.1099/00207713-41-2-261](https://doi.org/10.1099/00207713-41-2-261)
3. Cato EP. Transfer of *Peptostreptococcus parvulus* (Weinberg, Nativelle, and Prévot 1937) Smith 1957 to the Genus *Streptococcus*: *Streptococcus parvulus* (Weinberg, Nativelle, and Prévot 1937) comb. nov., nom. rev., emend. *Int J Syst Bacteriol* 1983; **33**:82-84. [doi:10.1099/00207713-33-1-82](https://doi.org/10.1099/00207713-33-1-82)
4. Pukall R, Lapidus A, Nolan M, Copeland A, Glavina Del Rio T, Lucas S, Chen F, Tice H, Cheng JF, Chertkov O, *et al.* Complete genome sequence of *Slackia heliotrinireducens* type strain (RHS 1^T). *Stand Genomic Sci* 2009; **1**:234-241. [doi:10.4056/sigs.37633](https://doi.org/10.4056/sigs.37633)